



56 Windsor Terrace, Bristol , BS3 4UG

£415,000

- Victorian Terrace Home
- Open Living Area
- Stylish Shower Room
- Beautifully Presented
- Within a 20 Minute Walk of Temple Meads Station
- Two DOUBLE Bedrooms
- Modern Kitchen
- Pretty Rear Garden
- Vibrant & Popular Location
- Energy Rating - D

## Charming Victorian Terrace in Desirable Lower Totterdown

A beautifully presented Victorian terrace located in the ever-popular and vibrant Lower Totterdown. This delightful home has been tastefully updated by the current owners and would make an ideal first-time purchase. Upon entering, you are welcomed by a charming vestibule featuring an internal wooden and stained glass door, leading into a bright and airy open-plan living and dining room. This space is full of character, boasting exposed original floorboards, a log burner, and ample built-in storage. The stylish kitchen is both functional and inviting, complete with oak wooden worktops, an integrated oven and hob, washing machine, dishwasher and French doors opening out onto a pretty rear garden—a perfect spot for relaxing or entertaining. Downstairs also features a contemporary shower room with a double walk-in shower.

Upstairs, you'll find two generous double bedrooms, each with period fireplaces, and one with exposed floorboards, adding to the home's historic charm. The rear garden offers a peaceful retreat with plenty of space for outdoor dining or social gatherings.

Located just a short stroll from Tesco Express, local pubs, and the beautiful Victoria Park, this property is also within a 20-minute walk of Bristol Temple Meads station, making it ideal for commuters. An early viewing is highly recommended to avoid disappointment.

SITTING / DINING ROOM 23'6 max x 14'11 max (7.16m max x 4.55m max)

KITCHEN 8'10 x 7'07 (2.69m x 2.31m)

BATHROOM 8'10 x 5'09 (2.69m x 1.75m )

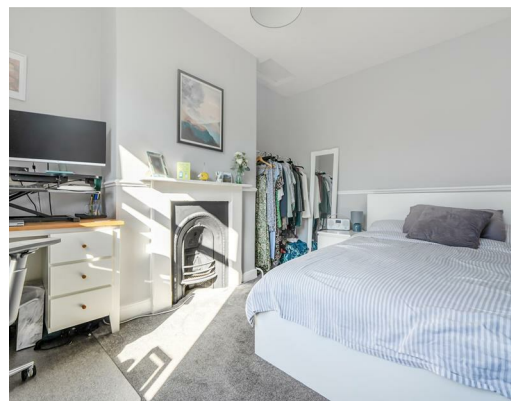
BEDROOM ONE 14'01 x 10'10 max (4.29m x 3.30m max)

BEDROOM TWO 12'02 x 9'05 max (3.71m x 2.87m max)

TENURE - FREEHOLD

COUNCIL TAX BAND - B

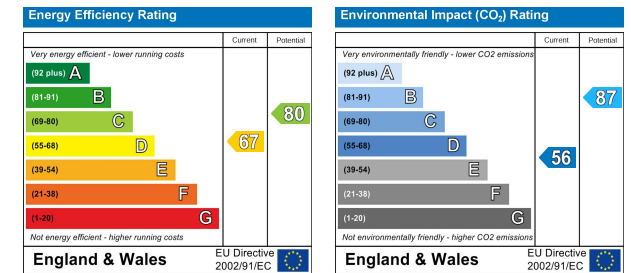
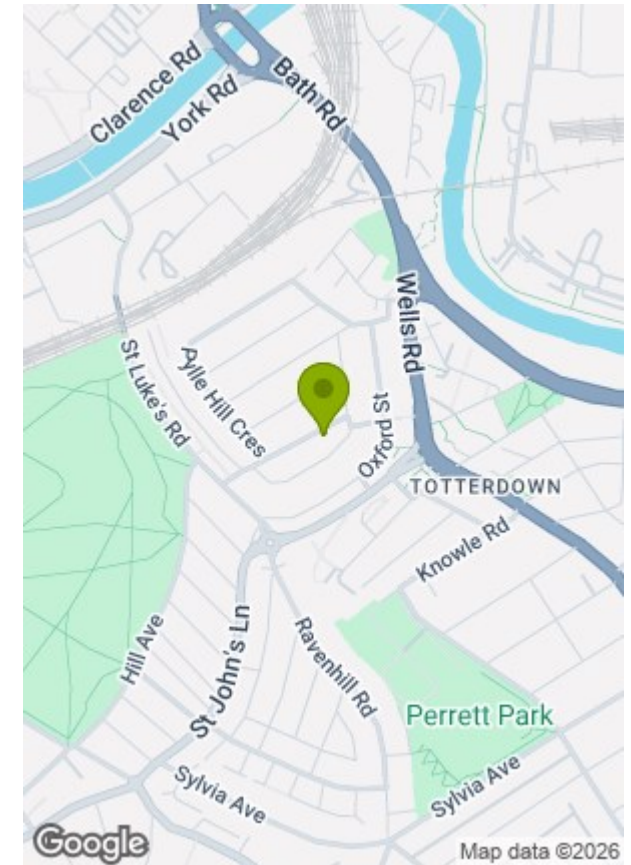
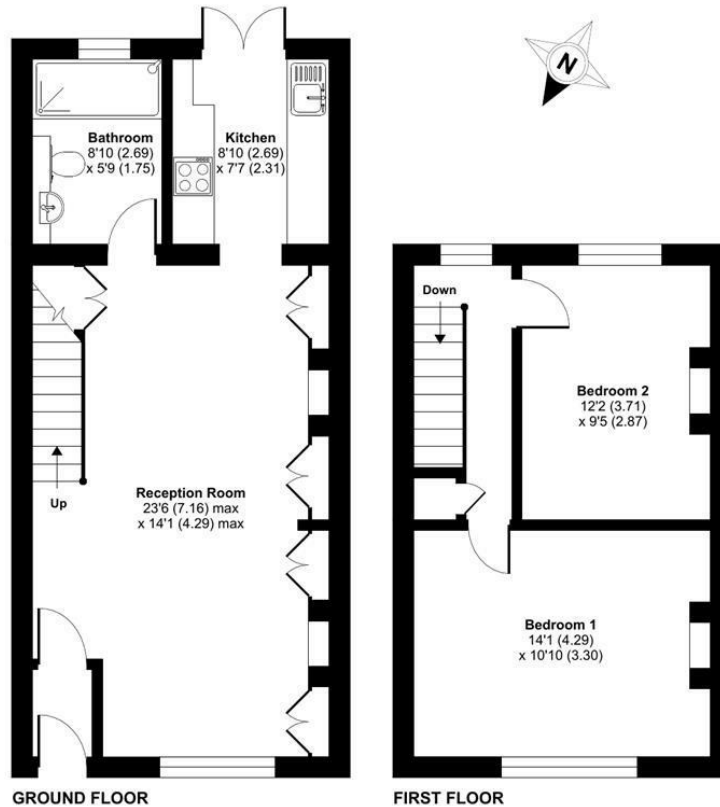




## Windsor Terrace, Totterdown, Bristol, BS3

Approximate Area = 804 sq ft / 74.7 sq m

For identification only - Not to scale



Floor plan produced in accordance with RICS Property Measurement 2nd Edition, Incorporating International Property Measurement Standards (IPMS2 Residential). © nichecom 2025. GREENWOODS SALES • LETTINGS • COMMERCIAL

These particulars, whilst believed to be accurate are set out as a general outline only for guidance and do not constitute any part of an offer or contract. Intending purchasers should not rely on them as statements of representation of fact, but must satisfy themselves by inspection or otherwise as to their accuracy. No person in this firm's employment has the authority to make or give any representation or warranty in respect of the property.